



Leaders in quality

Construction and infrastructure

 Protterra



PROJECT: AVONDALE HILLS

683 Avondale Creek Dr. Decatur GA 30032



PARCEL MAP

Total Acreage: +/- 1.96

Site 1: Acres: +/-1.04

Site 2: Acres: +/- 0.91

Municipality: DeKalb County

Zoning: MU 5 (Mixed Used very high density)

Use: 165 Apartment Units.



LOCATION MAP

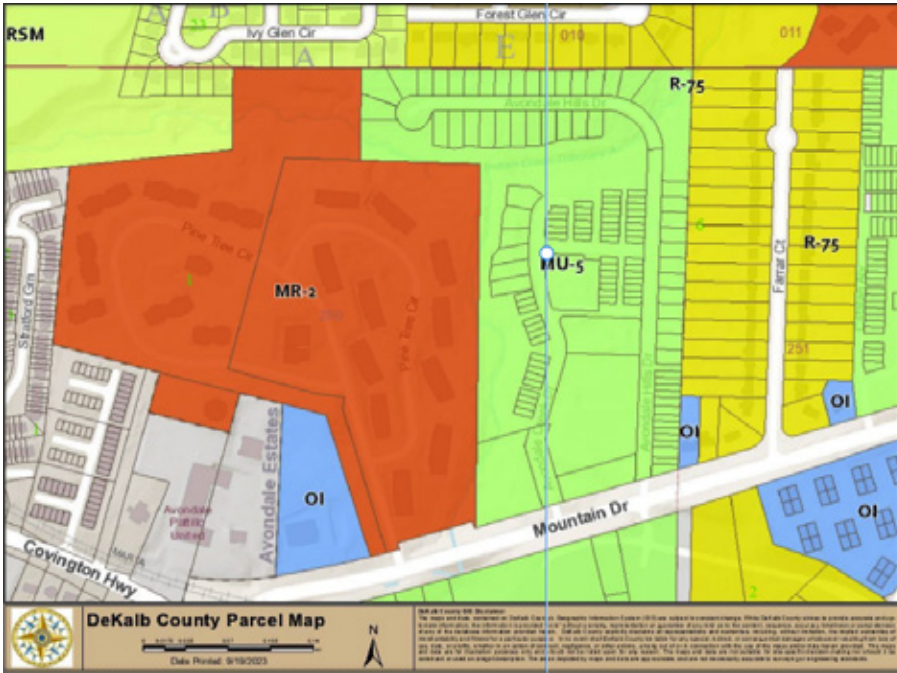
Leaders in quality construction and infrastructure





PROJECT: AVONDALE HILLS

683 Avondale Creek Dr. Decatur GA 30032



ZONING MAP

Total Acreage: +/- 1.96

Site 1: Acres: +/-1.04

Site 2: Acres: +/- 0.91

Municipality: DeKalb County

Zoning: MU 5 (Mixed Used
very high density)

Use: 165 Apartment Units.



TOPO MAP

Leaders in quality construction and infrastructure





PROJECT: AVONDALE HILLS

683 Avondale Creek Dr. Decatur GA 30032



WATER & SEWER MAP

Total Acreage: +/- 1.96

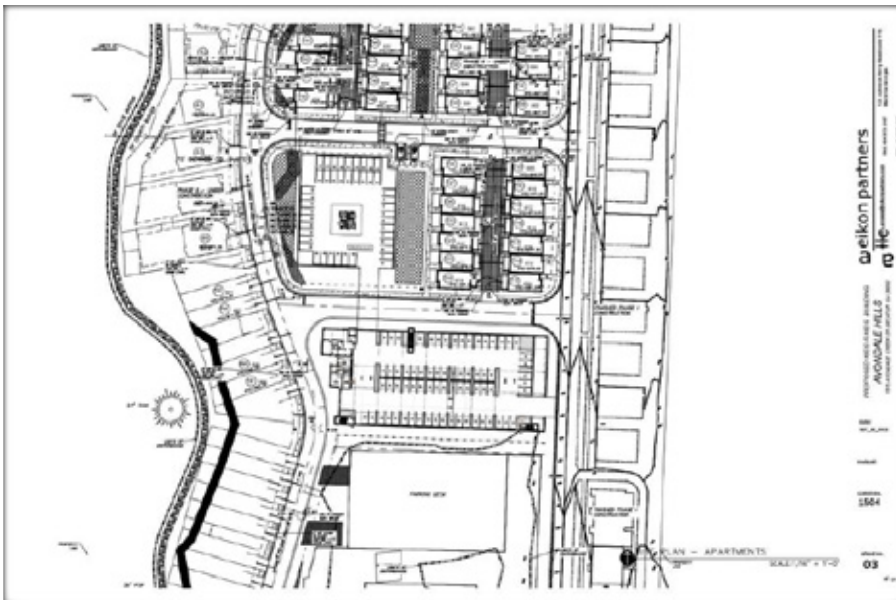
Site 1: Acres: +/- 1.04

Site 2: Acres: +/- 0.91

Municipality: DeKalb County

Zoning: MU 5 (Mixed Used very high density)

Use: 165 Apartment Units.



SITE PLAN

Leaders in quality construction and infrastructure





PROJECT: AVONDALE HILLS

683 Avondale Creek Dr. Decatur GA 30032



SITE PLAN

Total Acreage: +/- 1.96

Site 1: Acres: +/-1.04

Site 2: Acres: +/- 0.91

Municipality: DeKalb County

Zoning: MU 5 (Mixed Used
very high density)

Use: 165 Apartment Units.

Leaders in quality construction and infrastructure





Leaders in quality construction and infrastructure



Protterra

1355 Terrell Mill rd, Bldg 1474 Marietta, GA 30067
info@protterra.us - Tel: 404-618-9519 - Fax:404-973-2167
www.protterra.us