



Leaders in quality

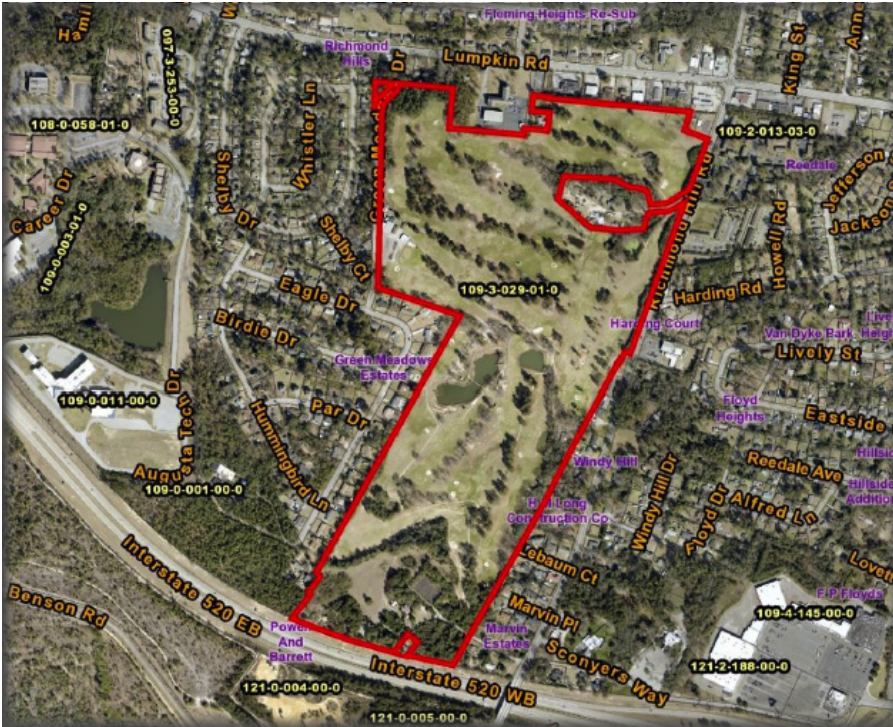
Construction and infrastructure

 Protterra



PROJECT: GREEN MEADOWS

2900 Green Meadows Dr Augusta, GA 30906



PARCEL MAP

Total Acreage: 124.91

Municipality: Augusta County

Zoning: B 2, R 1A, B 1



TOPO MAP

Leaders in quality construction and infrastructure

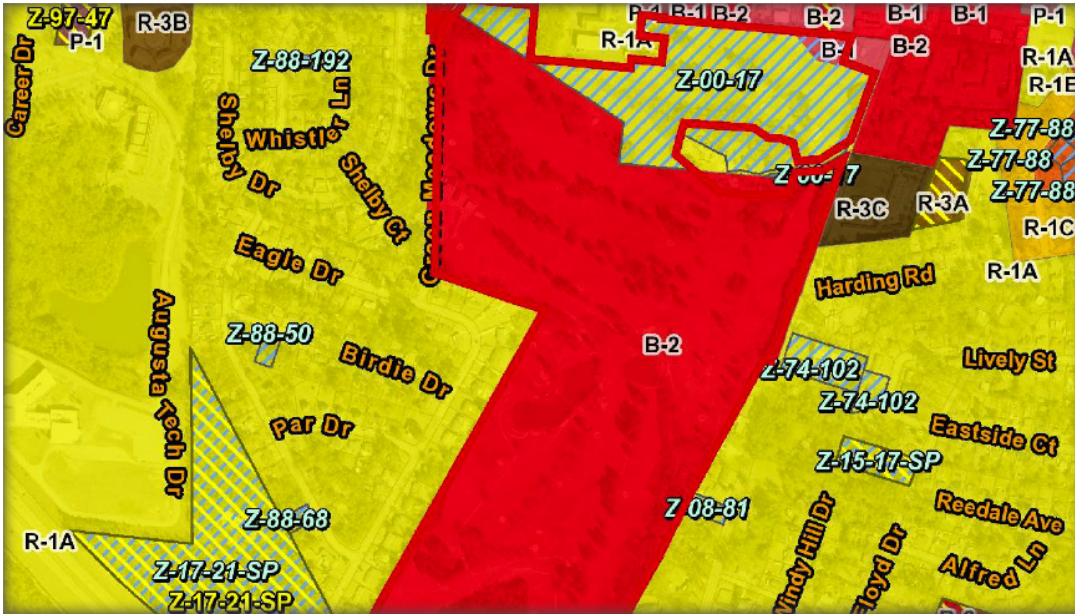




PROJECT: GREEN MEADOWS

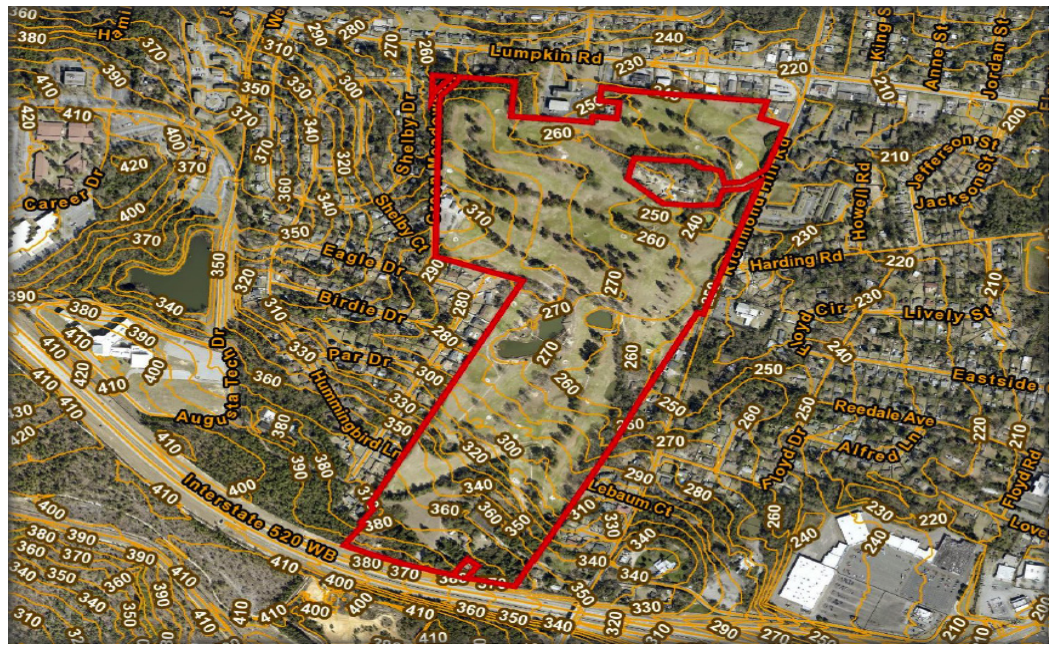
2900 Green Meadows Dr Augusta, GA 30906

ZONING MAP



Parcel Information	
Parcel ID	109-3-029-01-0
Zoning at map click	B-2, GENERAL BUSINESS
Also on parcel	B-2
Also on parcel	R-1A
Also on parcel	B-1
LOMA	None
Flood Zone	(Moderate to Low Risk)
Flood Map Number	13245C 0120G
Soil Type at map click	FuC
Also on parcel	TwD
Also on parcel	VaD
Also on parcel	LkB

Total Acreage: 124.91
Municipality: Augusta
County: Augusta
Zoning: B 2, R 1A, B 1



Leaders in quality construction and infrastructure

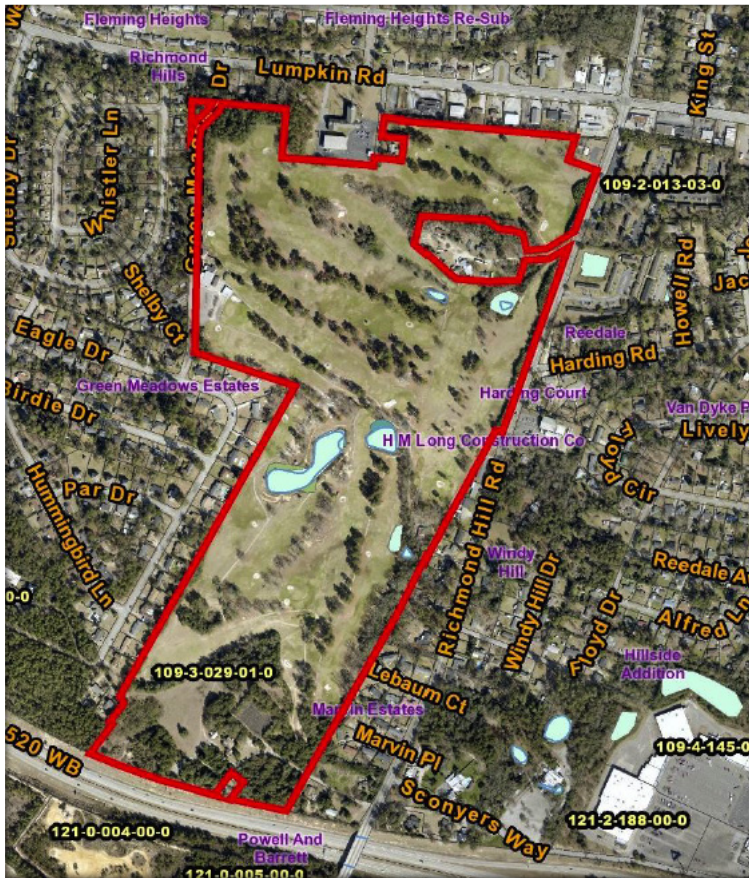




PROJECT: GREEN MEADOWS

2900 Green Meadows Dr Augusta, GA 30906

WET LAND MAP



Wetland Delineation Map
Delineated 9/27/2022
Augusta, Georgia Property
2900 Green Meadows Drive
Augusta, Richmond County, Georgia
Terracon Project No. HP227168

Map Layers Map

- Topography
- FEMA Flood
- Environment
 - Streams & Rivers
 - Detention Ponds
 - Ponds & Lakes
 - Augusta Canal
 - Wooded Areas
 - Greenspace
 - Water Basins
 - Wetlands
 - High Groundwater Pollution Susceptibility
 - Soils Types
- Election
- Zoning

Total Acreage: 124.91
Municipality: Augusta County
Zoning: B 2, R 1A, B 1



Leaders in quality construction and infrastructure





PROJECT: GREEN MEADOWS

2900 Green Meadows Dr Augusta, GA 30906

WET LAND MAP



Total Acreage: 124.91

Municipality: Augusta County

Zoning: B 2, R 1A, B 1

USE:

Townhouses: 252 units

Single Family: 200 units

Leaders in quality construction and infrastructure





Leaders in quality construction and infrastructure



Protterra

1355 Terrell Mill rd, Bldg 1474 Marietta, GA 30067
info@protterra.us - Tel: 404-618-9519 - Fax:404-973-2167
www.protterra.us